



Enduring Products. Enduring Beauty.

Wood Post Sleeve Surface Mount

Veranda White Composite Railing systems are designed to work with a number of different decking materials and surfaces. Before initiating any project, obtain a copy of your local building codes and understand them thoroughly. Local building code requirements will always supersede any and all suggested procedures and measurements in the following installation guideline.

Note: To ensure proper fastening, it is recommended that the concrete thickness be a minimum of 4" unless otherwise specified by local building codes. For more detailed instructions visit us online at www.verandadeck.com

For Concrete: (Fig 1) Concrete Must Be a Minimum of 4" Thick.

1. Determine the desired location(s) and finished height of the post sleeve from the deck surface.
2. Trim the post sleeve to the desired length.
3. Trim the length of the 4" x 4" wood post. The wood post length is typically 1-2" shorter than the post sleeve length.
4. Use the base of the mount as a template and mark the four corner holes for the concrete Wedge-Bolt Anchors (Included in kit).
5. Drill the marked holes using a 1/4" masonry drill bit. Drill the holes into the concrete base to a depth of at least 1/2" deeper than the length of the 1/4" x 3" Wedge Bolt Anchors. Blow the hole clean of dust and debris (Figure 3).
6. Locate the mount by aligning the mount corner holes over the drilled holes.
7. Insert the trimmed end of the 4" x 4" wood post into the mount. Ensure that the post is plumb and true.
8. If necessary, place a shim under the mount to make the post plumb and true. To secure wood insert to surface mount bracket, use two #8 x 1 inch flat head screws (not included) (Figure 2).
9. Insert the four concrete Wedge-Bolt Anchors into the corner holes of the mount. Begin tightening the Wedge-Bolt Anchor by rotating clockwise and applying pressure in toward the base. This will engage the first few threads as the Wedge-Bolt Anchor begins to advance. Continue to tighten until the head of the Wedge-Bolt Anchor is firmly seated against the post mount (Figure 4). Repeat for the remaining Wedge-Bolt Anchors.
10. Slide the post sleeve over the 4" x 4" treated wood post until it contacts the base of the mount.

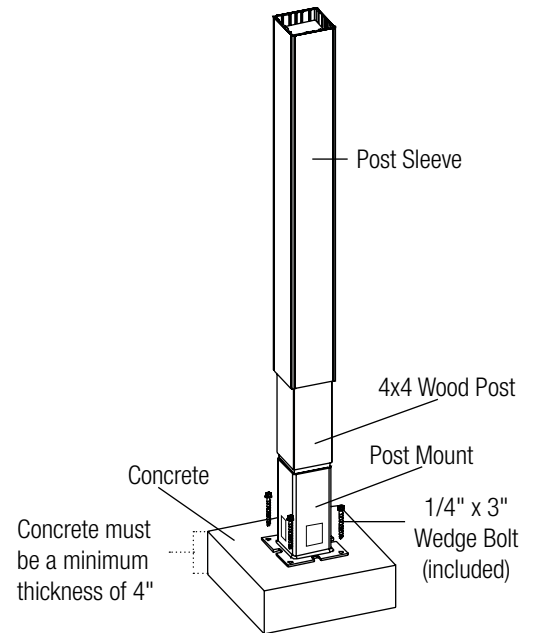


Figure 1

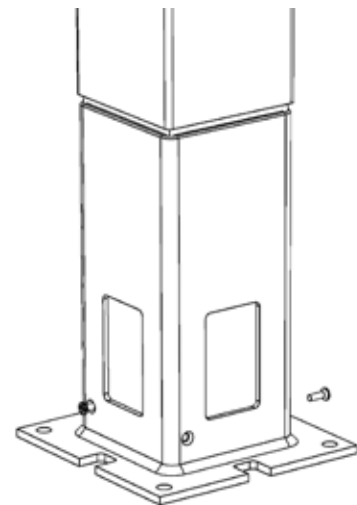


Figure 2

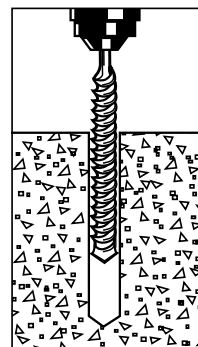


Figure 3

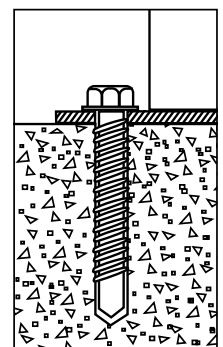


Figure 4

Wood Post Sleeve Surface Mount

Veranda White Composite Railing systems are designed to work with a number of different decking materials and surfaces. Before initiating any project, obtain a copy of your local building codes and understand them thoroughly. Local building code requirements will always supersede any and all suggested procedures and measurements in the following installation guideline.

Note: For more detailed instructions visit us online at www.verandadeck.com. For wood/composite applications; consumers must purchase: (4) Grade 5 galvanized 5-1/2" x 5/16" diameter bolts with matching nuts and 1-1/2" diameter washers included.

For Wood:

1. Determine the desired location(s) and finished height of the post sleeve from the deck surface.
2. The thickness of the wood/composite deck and reinforcement boards underneath the deck should be a minimum of 4". (Two treated and structurally sound 2" x 8" lumber under the deck board, (Figure 7). Fasten the reinforcement boards with 3" stainless steel fasteners as shown (Figure 5).
3. Trim the post sleeve to the desired length.
4. Trim the length of the 4" x 4" wood post. The wood post length is typically 1-2" shorter than the post sleeve length.
5. Use the base of the mount as a template and mark the four corner holes on the deck surface. Mark inside square of bracket on deck surface.
6. Drill four 3/8" holes at the marked locations, drilling through the deck board and the reinforcement boards. Drill 3/8" drainage hole in square through deck board and reinforcement boards for drainage.
7. Locate the mount by aligning the mount corner holes over the drilled holes.
8. Insert the trimmed end of the 4" x 4" wood post into the mount. Ensure that the post is plumb and true.
9. If necessary, place a shim under the mount to make the post plumb and true. To secure wood insert to surface mount bracket, use two #8 x 1 inch flat head screws (not included).
10. Insert the 5/16" x 5" galvanized hex bolts into the mount holes and the drilled holes. (Galvanized bolts & nuts, not included)
11. Fasten the four bolts underneath the reinforcement boards with the 5/16" Fender washer (included in kit) and 5/16" galvanized hex nuts (not included) (Figure 7).
12. Slide the post sleeve over the 4" x 4" treated wood post until it contacts the base of the mount.

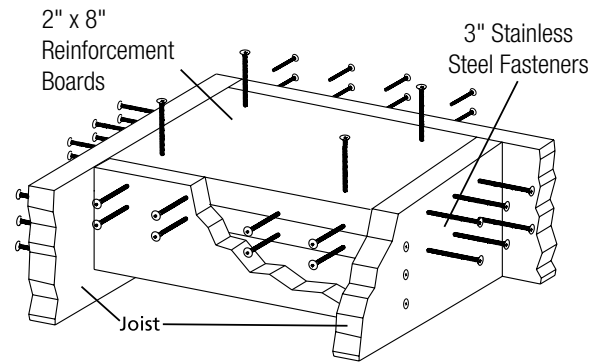


Figure 5

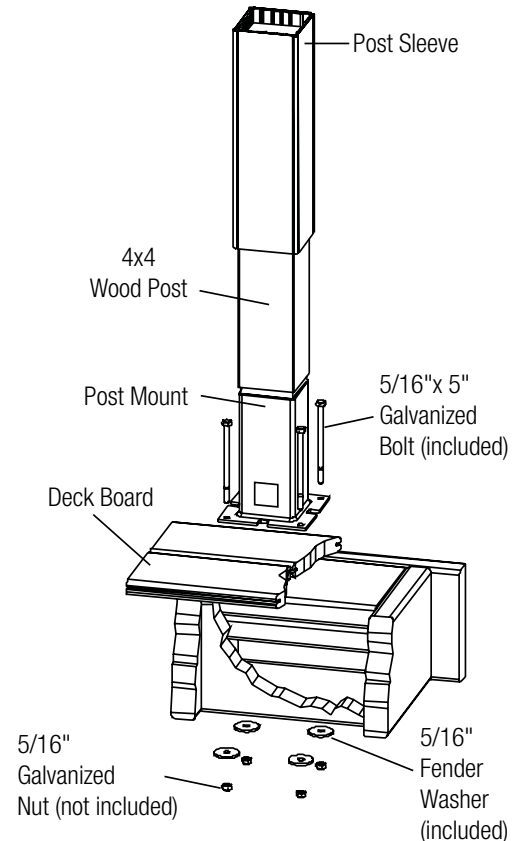


Figure 8

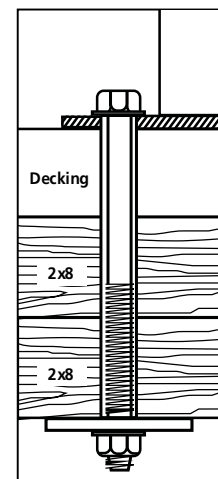


Figure 7